

# Freeze-Dried NCIMB Cultures

## How to revive your strains

Please read the hazard information sheet provided with your order carefully. All cultures should be regarded as pathogenic and should be opened within a laboratory with a suitable containment level, by personnel capable and qualified to safely handle microorganisms.

1. Our strains are supplied as cultures freeze dried on filter paper within glass ampoules which are sealed under vacuum. The filter paper is marked with the NCIMB number and the date it was manufactured (*figure 1*). Ampoules breakers were provided with your order (*figure 2*).



Figure 1

2. Using a file or diamond-tipped pen, carefully score around the circumference of the ampoule around the middle of the cotton wool plug (*figure 3*). Slide the ampoule breakers onto the ampoule so each one is placed either side of the score mark (*figure 4*).



Figure 3

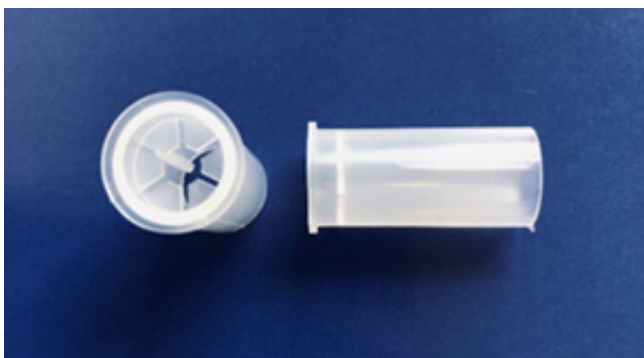
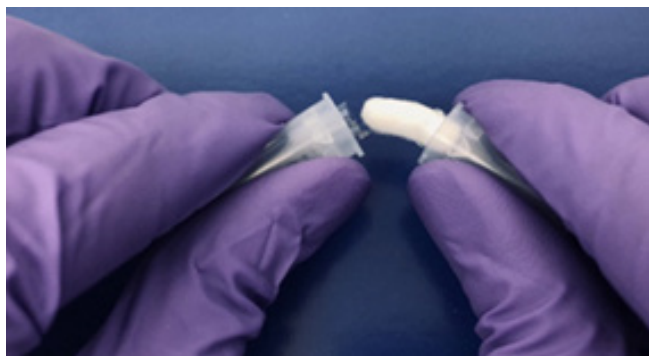


Figure 2



Figure 4

**3.** Apply force until the ampoule breaks (*figure 5*). The upper part of the ampoule and cotton plug should be discarded into a disinfectant solution. If necessary, use sterile forceps to remove the cotton wool plug from the bottom half of the ampoule.



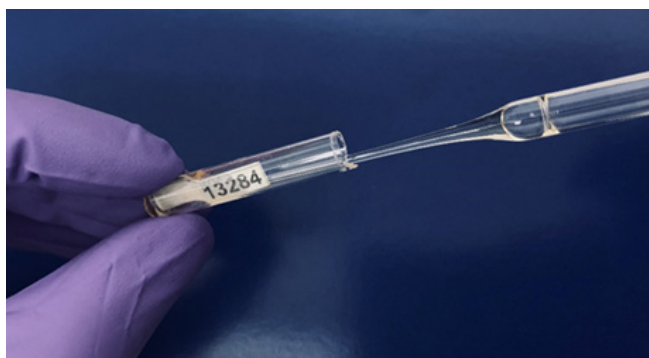
*Figure 5*

**4.** Flame the end of the ampoule (*figure 6*).



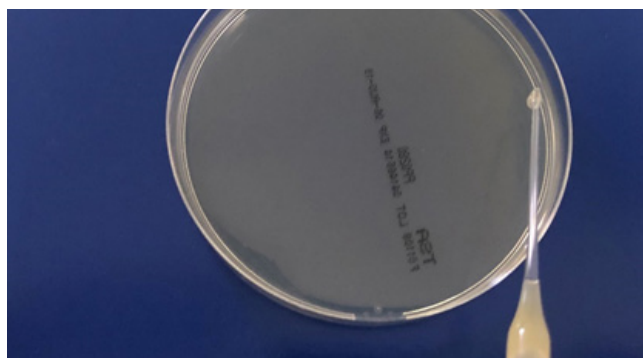
*Figure 6*

**5.** Using a sterile Pasteur pipette add approximately 0.5ml of broth to the ampoule and the contents should be gently mixed to avoid frothing and the formation of aerosols (*figure 7*).

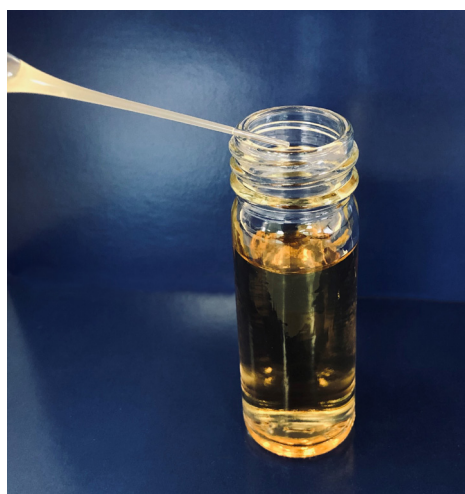


*Figure 7*

**6.** The suspension should be cultured onto a suitable medium / media and incubated under specified growth conditions and the ampoule should be discarded into a disinfectant solution (*figures 8 and 9*).



*Figure 8*



*Figure 9*